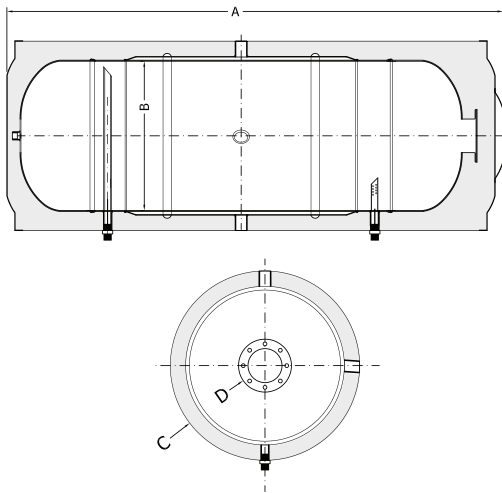
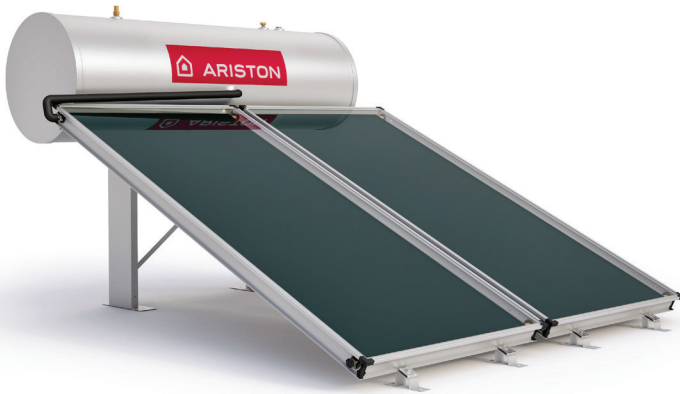


KAIROS THERMO CF-GR



Indirect solar system with natural circulation for the production of domestic hot water

- / High performance laser welded solar absorber with selective blue treatment
- / Easy installation (quick hydraulic connections)
- / Reduced thermal losses thanks to high thermal insulation
- / Solar Keymark Certificate
- / Manufactured according to European standards EN 12975 and EN 12976
- / Antibacterial design for drinking water
- / Immediate and continuous hot water
- / Functional design
- / Long service life of the system
- / With 2 kW heating element



TECHNICAL DATA

CF-GR 200/1

CF-GR 300/2

Technology		Closed Circuit	Closed Circuit
Heating element	kW	2	2
Number of collectors		1	2
Max height	m	1.3	1.3
Angle of Inclination	°	21	21
Domestic hot water tank capacity	l	199	298
Dimensions (LxDxH)	mm	2495x1285x1430	2489x2165x1430
Solar collector			
Gross area of solar collector	m ²	2.01	2.01
Solar collector input area	m ²	1.83	1.83
Net area of the solar collector	m ²	1.74	1.74
Absorber Material		Aluminium	Aluminium
Absorber coating		Blue Selective	Blue Selective
Absorber pipe material		Copper	Copper
Rear insulation thickness	mm	30	30
Welding type		Laser	Laser
Absorption power	%	95	95
Emissivity	%	5	5
Heat Tempered glass		Solar prismatic glass (3.2mm)	Solar prismatic glass (3.2mm)
Net weight of solar collector	kg	30	30
Tank modules			
Maximum pressure of the DHW circuit	bars	10	10
Tank material		Enamelled steel	Enamelled steel
Insulation		Hard polyurethane foam	Hard polyurethane foam
Thickness of insulation	mm	50	50
Maximum operating temperature of main balloon	°C	95	95
Outer shell		Magnelis (zinc-magnesium alloy)	Magnelis (zinc-magnesium alloy)
Weight of the empty tank	kg	68	100

200/1 300/2

Effective Capacity	l	199	298
A Length	mm	1285	1795
B Internal Diameter	mm	480	480
C External Diameter	mm	580	580
Surface of the Jacket	m ²	0.81	1.55
Capacity of the Jacket	l	9	18
D Flange Diameter	mm	140	140

CODE

3022338

3022340