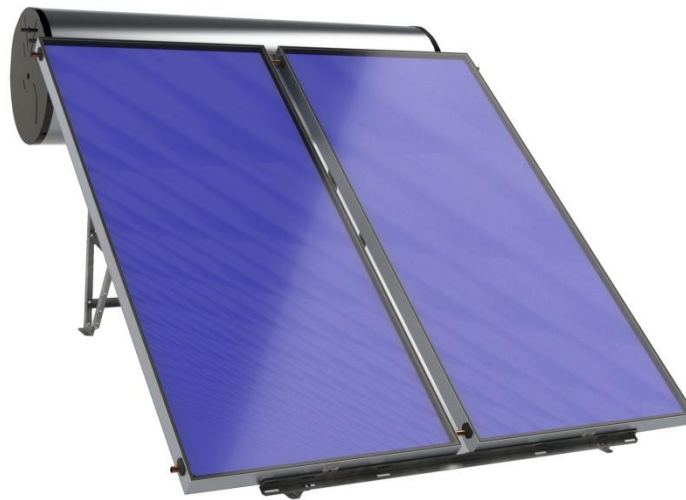
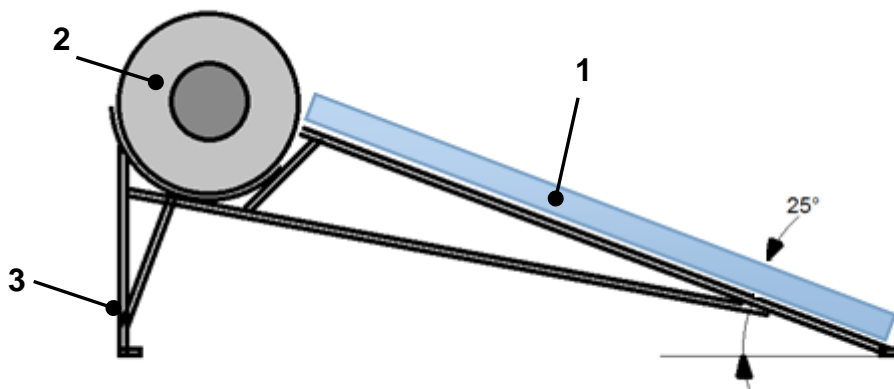


HD Solar Thermosyphon system



Main parts

- 1) Solar collector
- 2) Water tank
- 3) Mounting kit



Kit description (main parts)

Part	Quantity		
	Model 150	Model 200	Model 300
Solar panel	1x1,84m ²	1x1,84m ²	2x1,84m ²
Water tank	1x145 liter	1x190 liter	1x273 liter
Mounting kit	1 - 25° inclination	1 - 25° inclination	1 - 25° inclination

Main feature of the part 1 – Solar collector ECOTOP VHT 2.1

Description	U.M	value
Gross area	m ²	2,06
Gross aperture area	m ²	1,84
Length (A)	mm	2019
Width (B)	mm	1019
Height (C)	mm	89
Number of connections	n.	4
Dimensions of connections	Ø	18
Conversion factor η_0 (ref. to aperture area)	%	73.4
Heat transfer coeff. a1 (ref. to aperture area)	W/m ² K	3,409
Heat transfer coeff. a2 (ref. to aperture area)	W/m ² K ²	0,017
Weight	kg	32
Fluid content	l	0,76
Maximum pressure	bar	10
Stagnation temperature	°C	204,2
Heat capacity c (ref. to aperture area)	kJ/m ² K	4,453
Incidence angle modifier K_θ (50°)		0,94
Mass flow	l/h	100
Max mass flow	l/h	150
Aluminium absorber with selective surface treatment		
Solar absorption	%	95
Thermal emission	%	5
Thermal insulation with high density mineral wood with thickness	mm	40
Tempered solar glass with thickness	mm	3,2
Transmission factor	%	91,1

Mark of conformity



Registration No.

011-752693 F

Main feature of the part 2 – HD Water tank

Features			Model 150	Model 200	Model 300
Water volume	l		145	190	273
Primary circuit volume	l		8,6	11,2	15,9
Isolation system	type\mm	Expanded polyurethane Min thickness=40 mm average density=42kg/m ³			
External surface	type	Painted galvanized steel			
Tank material	type	Steel with enamel treatment 800°C			
Protection device	type	Magnesium Anode			
	diam\leng	22\500 mm	22\650 mm	22\790 mm	
Overall dimensions	Diameter	mm	560	560	560
	Length	mm	1070	1315	1765
Net weight	kg	53	72	83	
Max working pressure	Water side	bar	8		
	Heating side	bar	2,5		
Electric backup	Capacity	kW	2,0	2,0	3,0
Connection	Water side	type	G 1/2" female		
	Heating side	type	G 1/2" female		
	Elect Heaters	type	G 1 1/4" female		

Main feature of the part 3 – **Mounting Kit.**

Description	Value
Material	Galvanized steel
Dimension	L type 37x37x2,5 mm
Inclination Angle	25°
Component included	See list below

List of component

Description	Features	Model 150	Model 200	Model 300
Safety valve on water side	2 bar 1/2"	1	1	1
Nipple	1/2"	1	1	1
Cap	1/2"	2	2	2
Safety valve on primary side	8 bar 1/2"	1	1	1
Compression male elbow		2	2	2
Gasket	3/4"	4	4	4
Outlet flexible pipe	0,35m	1	1	1
Inlet flexible pipe	2,10m	1	1	1
Check valve		1	1	1
Pipe isolation	Ø 20/22 L 2,5 m	1	1	1
Interconnection between collectors	18mm			2

*Anchoring fixing to the terrace are not supplied.
Carrier fluid not supplied*

List of optional accessories

- *Water temperature safety valve*

Codes *Tank(part 1) and mounting kit (part 2) are supplied together*

➤ **0XDN1UXA ECOTOP VHT 2,1**

➤ **Thermosiphon kit:**

In the combination herebelow

Thermosiphon kit (Code)	Sub-components	
	Parts	Ferrolì Code
Sistema Solare Completo HD 150 (0XDD12XA)	Tank HD 150	072245X0
	Installation Kit HD150	072248X0
Sistema Solare Completo HD 200 (0XDD13XA)	Tank HD 200	072246X0
	Installation Kit HD200	072249X0
Sistema Solare Completo HD 300 (0XDD14XA)	Tank HD 300	072247X0
	Installation Kit HD300	072250X0