



BV2X - AISI 316L Stainless steel calorifier with two removable heat exchangers

AISI 316L Stainless steel calorifier designed for the production and storage of domestic hot water (DHW). The tank is equipped with two AISI 316L stainless steel U tube bundle removable heat exchangers. The lower heat

exchanger is bent down in order to avoid the growth of bacteria in the coldest part of the cylinder. Cylinders are also prepared to host a backup immersion heater (not supplied).

HEAT SOURCE



APPLICATION



TECHNICAL FEATURES

DHW cylinder

Heat exchanger

General features

Material	AISI 316L Stainless steel (1.4404)
Internal protective treatment	Pickling and passivation
External protective treatment	Pickling and passivation
Rating (P max. / T max.)	6 bar / 95°C
Cathodic protection	Magnesium anode
Material	AISI 316L Stainless steel (1.4404) over a stainless steel plate
Internal protective treatment	Pickling and passivation
External protective treatment	Pickling and passivation
Type	U tube bundle expanded over a removable plate
Rating (P max. / T max.)	10 bar / 95°C
Capacity	200 - 5000 L
Warranty	5 years (DHW cylinder) - 2 years (heat exchanger)
Insulation	- Soft insulation with polyester + PVC: Fire retardant class B2 (DIN 4102) - Hard insulation: - up to 2000 L with polyurethane foam + PVC: Fire retardant class B3 (DIN 4102) - from 2500 to 5000 L with polyester (15 mm) + polystyrene (85 mm) + PVC: Fire retardant class B2 (DIN 4102)

In compliance with

- Pressure Equipment Directive (PED) 2014/68/UE Art. 4 Para 3
- Italian MOH specifications (products suitable to contain potable water)
- Energy related Products (Erp) Directive 2009/125/CE

ACCESSORIES (page 218)



Impressed current electronic anode



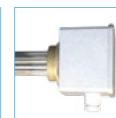
Electronic control unit



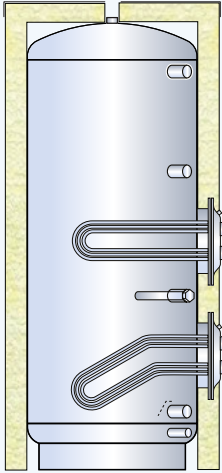
Thermostat



Thermometer



1 1/2 electric immersion heater



BV2X - Hard insulation and PVC jacket

CODE	INSULATION THICK. (mm)	ErP CLASS	HEAT LOSS S (W)	REAL CAPACITY (L)	LOWER HEAT EXCHANGER (m ²) / (L) *	UPPER HEAT EXCHANGER (m ²) / (L) *
BV2X 00200 R	50	C	65,7	193,1	0,50 / 2,6	0,50 / 2,6
BV2X 00300 R	50	C	77,2	293,6	0,75 / 4,3	0,75 / 4,3
BV2X 00500 R	50	C	89,6	503,6	1,00 / 6,1	1,00 / 6,1
BV2X 00800 R	100	C	119,7	760,5	2,00 / 10,4	1,50 / 6,6
BV2X 01000 R	100	C	123,6	942,2	3,00 / 15,7	2,00 / 10,4
BV2X 01500 R	100	C	142,6	1483,6	3,00 / 15,7	3,00 / 15,7
BV2X 02000 R	100	C	157,4	1967,2	4,00 / 21,7	4,00 / 21,7
BV2X 02500 R	100	-	-	2510,7	5,00 / 27,4	4,00 / 21,7
BV2X 03000 R	100	-	-	2974,7	6,00 / 33,1	5,00 / 27,4
BV2X 04000 R	100	-	-	3911,6	8,00 / 42,9	8,00 / 42,9
BV2X 05000 R	100	-	-	5022,4	10,00 / 51,5	10,00 / 51,5

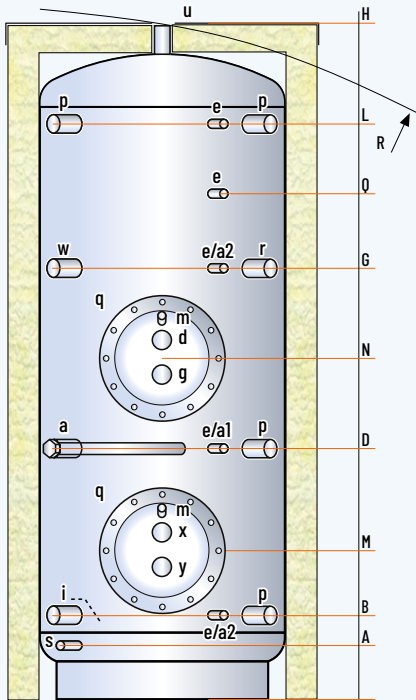
 CALORIFIERS WITH
 REMOVABLE HEAT
 EXCHANGERS

BV2X - Soft insulation with polyester and PVC jacket

CODE	INSULATION THICK. (mm)	ErP CLASS	HEAT LOSS S (W)	REAL CAPACITY (L)	LOWER HEAT EXCHANGER (m ²) / (L) *	UPPER HEAT EXCHANGER (m ²) / (L) *
BV2X 00800 F	130	C	134,1	760,5	2,00 / 10,4	1,50 / 6,6
BV2X 01000 F	130	C	144,4	942,2	3,00 / 15,7	2,00 / 10,4
BV2X 01500 F	130	C	170,5	1483,6	3,00 / 15,7	3,00 / 15,7
BV2X 02000 F	130	C	188,3	1967,2	4,00 / 21,7	4,00 / 21,7
BV2X 02500 F	100	-	-	2510,7	5,00 / 27,4	4,00 / 21,7
BV2X 03000 F	100	-	-	2974,7	6,00 / 33,1	5,00 / 27,4
BV2X 04000 F	100	-	-	3911,6	8,00 / 42,9	8,00 / 42,9
BV2X 05000 F	100	-	-	5022,4	10,00 / 51,5	10,00 / 51,5

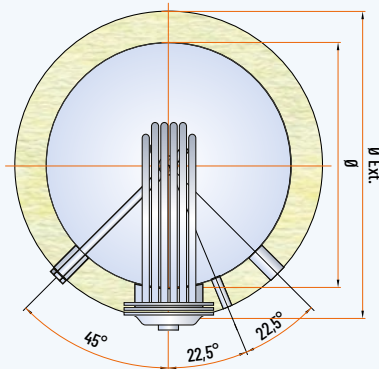
* Volume occupied by the heat exchanger and its support structure

200-1500 L

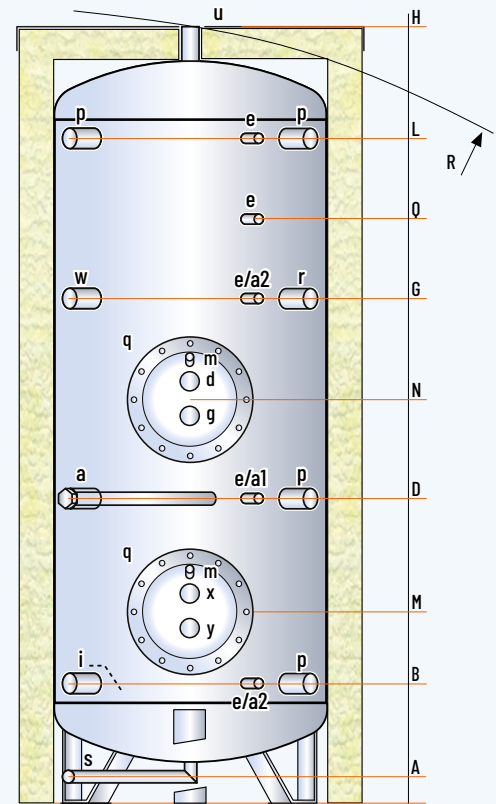


LEGEND

- a . Magnesium anode
- a1-a2. Opening for electronic anode
- d . Boiler flow
- e . Thermometer - Sensor
- g . Boiler return
- i . Domestic cold water inlet
- m. Heat exchanger vent
- p . Free connection
- q . Heat exchanger flange
- r . Recirculation
- s . Drain
- u . Domestic hot water outlet
- x . Solar system flow
- y . Solar system return
- w . Opening for immersion heater



2000-5000 L



MODEL	DIMENSIONS (mm)		Ø EXT **	R *	LOWER HEAT EXCHANGER (m ²)	UPPER HEAT EXCHANGER (m ²)	Electronic anode (optional)	WEIGHT (kg)
	Ø	H	(Hard/Soft ins.)					
BV2X 00200 R	450	1305	550	1430	0,50	0,50	a1 (EPS 375/125)	78
BV2X 00300 R	500	1595	600	1720	0,75	0,75	a1 (EPS 375/125)	91
BV2X 00500 R	650	1645	750	1820	1,00	1,00	a1 (EPS 375/125)	110
BV2X 00800_	790	1750	990/1050	1745	2,00	1,50	a1 (EPS 375/125)	183
BV2X 01000_	790	2110	990/1050	2095	3,00	2,00	a1 (EPS 375/125)	213
BV2X 01500_	1000	2115	1200/1260	2145	3,00	3,00	a2 (EPS 375/125)	272
BV2X 02000_	1100	2465	1300/1360	2465	4,00	4,00	a2 (EPS 375/125)	348
BV2X 02500_	1200	2595	1400	2640	5,00	4,00	a2 (EPS 700/200)	404
BV2X 03000_	1250	2795	1450	2835	6,00	5,00	a2 (EPS 700/200)	458
BV2X 04000_	1400	2925	1600	2995	8,00	8,00	a2 (EPS 700/200)	648
BV2X 05000_	1600	2955	1800	3090	10,00	10,00	a2 (EPS 700/200)	748

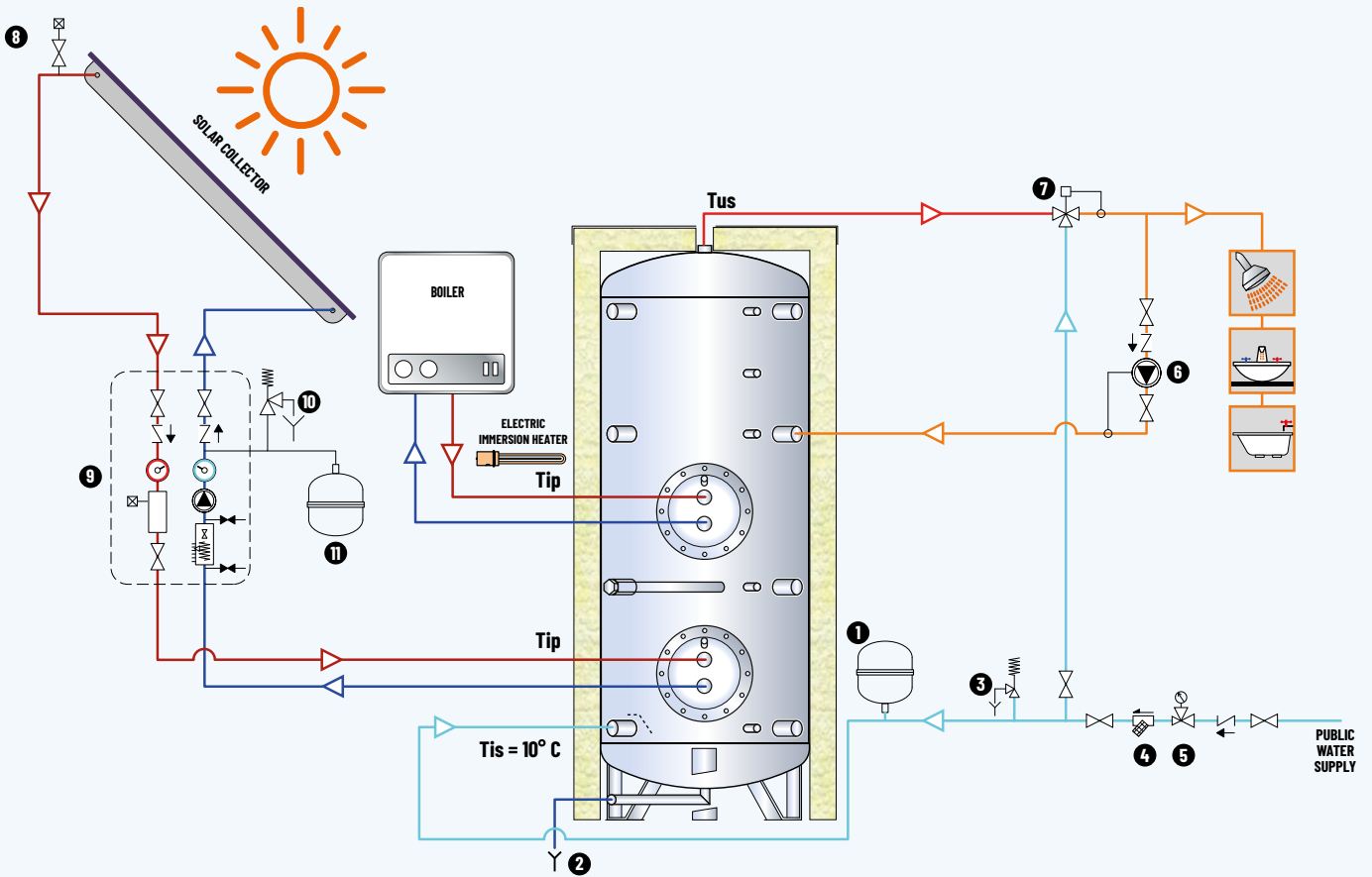
* For capacities from 200 to 500 litres, the tilt height refers to the insulated cylinder
 ** The insulation is removable except for models from 200 to 500 litres

MODEL	HEIGHTS (mm)									CONNECTIONS (GAS)						
	A	B	D	G	L	M	N	Q		a p r	d g x y	e	i u	m	s	w
BV2X 00200 R	110	190	515	890	1075	350	785	975	1"¼	1"	½"	1"¼	¾"	1"	1"½	220/290
BV2X 00300 R	110	215	595	1080	1350	375	870	1215	1"¼	1"	½"	1"¼	¾"	1"	1"½	220/290
BV2X 00500 R	135	240	615	1105	1375	445	890	1240	1"¼	1"	½"	1"¼	¾"	1"	1"½	220/290
BV2X 00800_	170	275	655	1145	1410	450	970	1280	1"¼	2"	½"	1"½	¾"	1"	1"½	300/380
BV2X 01000_	170	275	810	1355	1755	455	1045	1555	1"¼	2"	½"	1"½	¾"	1"	1"½	300/380
BV2X 01500_	235	340	765	1400	1725	520	1080	1250	1"¼	2"	½"	2"	¾"	1"	1"½	300/380
BV2X 02000_	100	475	1010	1515	1975	655	1260	1645	1"¼	2"	½"	2"	¾"	1"	1"½	350/430
BV2X 02500_	100	505	1040	1600	2105	690	1290	1750	1"¼	2"	½"	2"	¾"	1"	1"½	350/430
BV2X 03000_	90	515	1100	1730	2300	675	1415	1880	1"¼	2"	½"	3"	¾"	1"	1"½	350/430
BV2X 04000_	120	595	1190	1815	2380	755	1505	1965	1"¼	2"	½"	3"	¾"	1"	1"½	350/430
BV2X 05000_	100	600	1185	1815	2385	825	1505	1965	1"¼	2"	½"	3"	¾"	1"	1"½	350/430

Disclaimer: this layout is purely indicative. It does not replace consultant's design

LEGEND

- | | | |
|---|-----------------------------|--------------------------------------|
| 1 . Domestic water expansion vessel | 5 . Pressure reducing valve | 9 . Solar system control unit |
| 2 . Domestic water drain | 6 . DWH Recirculation pump | 10 . Solar system safety kit (6 bar) |
| 3 . Domestic water safety valve (6 bar) | 7 . DHW 3-way valve | 11 . Solar system expansion vessel |
| 4 . Strainer | 8 . Vent with valve | |



CALORIFIERS WITH
REMOVABLE HEAT
EXCHANGERS